



Year 2 Weekly Homework Week 2

Rights Respecting Article: 29: *We have the right to develop our personalities, talents and abilities*
GG: *Quality Education*

MATHS

Times Tables 1-12

<https://www.timestables.co.uk/10-times-table.html>

<https://www.topmarks.co.uk/maths-games/hit-the-button>

Maths Daily Lessons

Multiplication: equal and unequal groups, Lessons 1-5

<https://classroom.thenational.academy/units/multiplication-equal-and-unequal-groups-f5e6>

LITERACY

Spellings:

eye, old, water, Mrs, again, break

Make sure you check the meaning of all new words in a dictionary.

Literacy Daily Lessons

Persuasion: Why you should never light fires in a dry forest, Lessons 1-5

<https://classroom.thenational.academy/units/persuasion-why-you-should-never-light-fires-in-a-dry-forest-6fe4>

Reading - select a book of your choice

<https://www.purplemash.com/sch/osmani>

<https://stories.audible.com/discovery>

SCIENCE

What are the planets in our solar system?

In this lesson, we will be learning all about the different planets in our solar system. We will learn a fact about each planet and you'll hear a clever way of remembering the order of the planets.

You will need a piece of paper and a pencil.

<https://classroom.thenational.academy/lessons/what-are-the-planets-in-our-solar-system-68r68d>

Geography

Villages, Towns and Cities, Lessons: 2 – What is a settlement?

<https://classroom.thenational.academy/units/villages-towns-and-cities-28b9>

LI: To reflect on the importance of a shared golden rule.



Key words:

Golden rule, behaviour, kind, happy, sad, helpful, fair, share, thoughtful

LS:

The Golden rule means...

If everyone followed the Golden rule...

When I am not treated fairly I feel...



Think about:

What does the Golden rule mean?

What would life be like if everyone followed the rule?

How do they feel when they are not treated fairly?

What would be different if everyone obeyed the Golden rule?

GOLDEN BOX:

I have a scroll with a golden rule on it.

There is one rule that both non-religious people and religious people share; some say it is the most important rule. The rule is: **'Treat other people as you would like them to treat you.'**

What does this rule mean and what would life be like if people followed this rule?

In 2014 the NATRE Spirited Arts competition had 'The Golden Rule' as a category.

Look at some of the entries to the competition:

<https://www.natre.org.uk/about-natre/projects/spirited-arts/spirited-arts-gallery/archive/2014/?page=1&ThemeID=60>

Task:

Can you create a picture that shows the Golden Rule being followed and either write or explain what your picture is about?



Success Criteria:

- 1. Read the golden rule.**
- 2. Draw to show how the rule could be followed.**
- 3. Write to explain your picture.**

T - Use example pictures to support ideas.

TT – Write to explain what the picture is about.

TTT - Write to explain what the picture is about.

Challenge: Explain which actions would break your golden rule.

Creative Arts/DT

Scrap Colouring

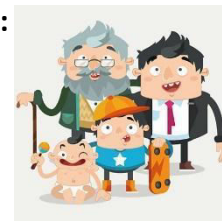
<http://scrapcoloring.com/texts/coloring-pages>

Design Museum <https://designmuseum.org/whats-on/families/create-and-make/create-and-make-at-home>

PSHE

What is the human life cycle? What stages do we go through in our lives? Find old pictures of your parents and draw a life cycle of them – showing how they looked as:

- Stage one – a baby
- Stage two – a child
- Stage three – an adult
- Stage four – how you think they might look as grandparents.



PE- Daily workouts



[5 Minute Work Out](#)



[P.E with Joe](#)